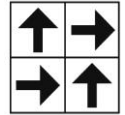




	Standard Ref	Sheet	Tiles
Product name		Recover	Recover
Fibre type		80% Recycled Polyester, 20% Polyester	80% recycled Polyester 20% Polyester
Fibre weight (+/- 10%)		1000g/m sq	1000g/m sq
Total weight (+/- 10%)		1000g/m sq	2000g/m sq
Total thickness (mm) (+/- 10%)		5.5	7.8
Dimensions		2mx30m	50x50cm
Backing material			Eco Polyester Backing
Tiles per box			16 (4m sq)
Light reflectance value	BS 8493:2008	See table online	See table online
Static loading	BS 4939/ISO 3416	Pass	Pass
Dynamic loading	BS ISO 2094	Pass	Pass
Lisson Tretrad	BS EN 1963	4	4
Colour fastness: light	BS EN ISO 105-B02	Grade 6	Grade 6 (8 max.)
Colour fastness: shampoo	BS 1006-UK-TB	Grade 5	Grade 5
Colour fastness: rub	BS EN 105-X12	Grade 5	Grade 5
Colour fastness: water	BS EN 105-E01	Grade 5	Grade 5
Hot metal nut	BS 4790	LRC	LRC
Fire Resistance	BS EN13501-1	Class Bfl s1	Class Bfl s1
Class Rating	BS EN 1307	33 Heavy Contract	33 Heavy Contract
Castor chair rating	BS EN 985 (R2.9)	pass	Pass
Electrical Resistance	IBM / ICL Electrodes	Pass H 4.76 X 108, V 2.89 X 108	Pass H 4.76 X 108, V 2.89 X 108
Dimensional stability to heat	BS 4682 Part 3	Tested	Tested
Dimensional stability to water	BS 4682 Part 4	Tested	Tested
Dimensional stability ambient	BS4682 Part 2	Tested	Tested



Recommended tile layout



## Installation

All aspects of sub floor preparation and flooring installation must be carried out in accordance with BS5325:2001 Code of Practice for installation of Textile Floorcoverings. Sheet carpet should be fully adhered with approved adhesives. The products should be allowed to acclimatise for 24 hours at room temperature (15-20°C) prior to installation. We recommend that the tiles are installed by turning alternate tiles through 90° to obtain a chequerboard pattern and should be adhered with approved adhesives. During both planning and installation, consideration must be given to batch matching and pile direction. For further information contact the Rawson Carpet Sales Team.

## Maintenance

A regular maintenance programme is always recommended. Use a suction type of vacuum cleaner for daily maintenance. Periodic shampooing and cleaning by a professional cleaning company should be carried out to keep floorcoverings in good condition. Do not use petrol or similar solvents on these products. It is strongly recommended that to prevent excessive flattening, use cups and pads under heavy furniture and chair mats under castor chairs. With tile products, traffic paths can be avoided by interchanging the tiles as necessary.

## Environmental information

- Rawson products achieve either A or A+ across BREEAM defined building regulations. For specific rating, please refer to [www.breeam.co.uk](http://www.breeam.co.uk)
- All Rawson carpet sheet and tile are made in the UK.
- Wherever possible, raw materials are sourced in the UK.
- Continuous assessment and improvement of manufacturing process to minimise use of raw materials/power.
- Where ever possible , all manufacturing waste is recycled.

All weights and thickness quoted +/- 10%. Due to batch to batch variation, production material may vary in colour from that shown on the sample card.