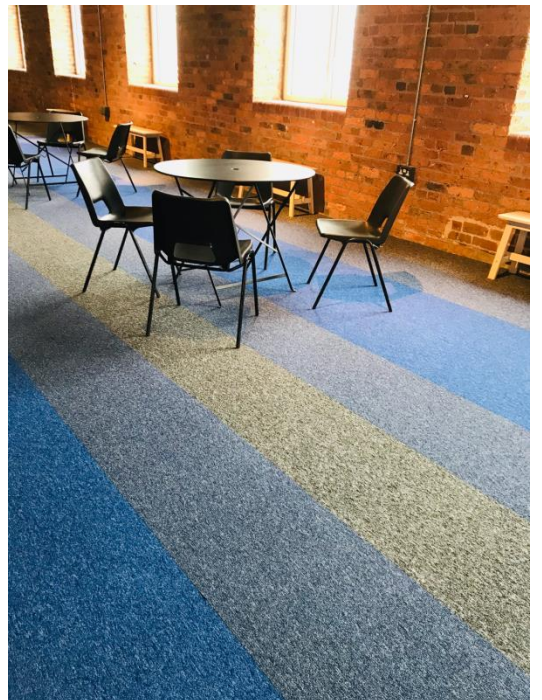
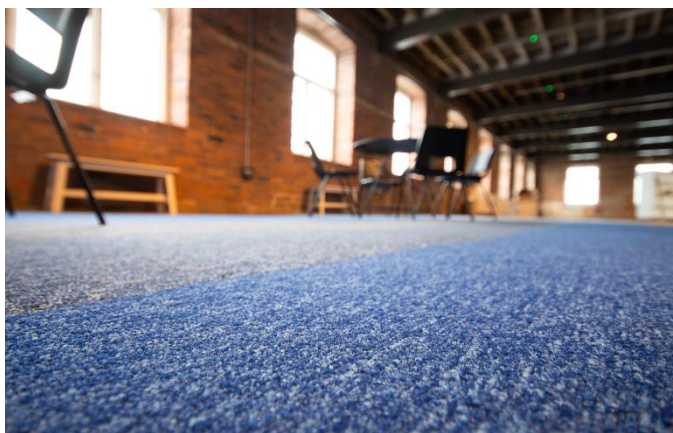




The Calder Building Refurbishment



The Calder building owned by the Hepworth offers an open commercial space, utilised for workplace seminars and teaching facilities. The old heritage building is characterised by the warehouse brickwork of old and the design brief included that of a comfortable flooring installation to soften the space and create a warm and inviting workspace environment. Here Rawson's **Jazz** Carpet tiles have been used to do just that. Solution Dyed Nylon Carpet Tiles by Rawson Carpet Solutions offer peace of mind in such environments with class 33 heavy contract accreditation and castor chair suitability. The tiles are BRE A+ accredited and come with 24 optional colourways. Many colours have been chosen to provide the aesthetic and in one breakout space, utilising matching yarns in the thicker Jazz cut carpet tile, a random lay of these provides the required fragmentation design into the jazz cut for beanbag and floor seating comfort.



Get in touch with our creative sales team for more information and technical knowledge.

+44 (0) 1924 382860 rcsales@werawson.co.uk
www.rawsoncarpetsolutions.co.uk

